

STRATOS



SKY CABINS

A woman with blonde hair, wearing a white turtleneck sweater and dark sunglasses, is sitting on a balcony. She is looking out over a snowy mountain landscape under a clear blue sky. In the background, another person wearing a white hat and sunglasses is also sitting on the balcony. The scene is bright and sunny, suggesting a high-altitude mountain resort.

OWN THE SKY



SKY CABINS

Perched high atop Stratos is a rare and breathtaking collection of just six unique Sky Cabins. Each has its own sophisticated design and spacious layout, providing a living experience unlike anything ever offered in Base Village. All six celebrate the beauty of the Elk Mountains, with expansive glass, gracious indoor/outdoor living and refined alpine interiors. These are truly one-of-a-kind mountain escapes that live like single-family homes, sitting high above the conveniences and amenities of a luxury resort within the heart of a vibrant village.





THE GRAND FINALE

THE FINAL RESIDENTIAL COLLECTION IN SNOWMASS BASE VILLAGE

The Stratos Residential Collection is the culmination of years of inspired design and sustainable construction by East West Partners and its partnership with Aspen Skiing Company and KSL Capital Partners, completing the vision for a vibrant, new Snowmass Base Village. Today, nearly 500 families from across the country and around the world call Base Village home.

Eight sold-out residential collections have come before, elevating Snowmass real estate to the next level of luxury. The Sky Cabins at Stratos represent the pinnacle of exclusive luxury residential design in Snowmass, offering the ultimate in spectacular, slope-side living.

FRONT-ROW ACCESS TO SNOWMASS RESORT

Those who value time and seek true hassle-free luxury prefer to live where they ski. It simply doesn't get any better or easier than ski-in/ski-out living on the largest and most diverse of the four Aspen Snowmass mountains.

With over 4,400 vertical feet of skiable terrain, challenging steeps, immaculate groomers and a world-class ski school, it is no wonder that most people staying in Aspen choose to ski at Snowmass. Owning a Sky Cabin lets you skip the traffic, the parking, the schlepping and the tears, allowing you to fully embrace the powder, après, friends and family.





THE VILLAGE AT YOUR DOORSTEP

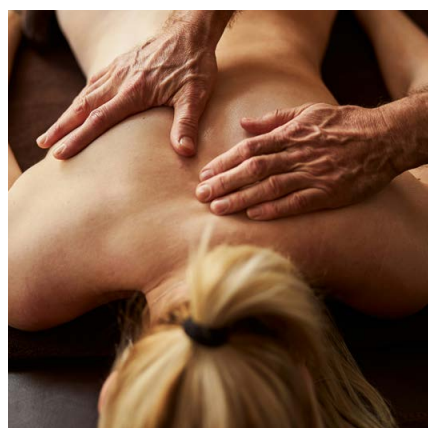
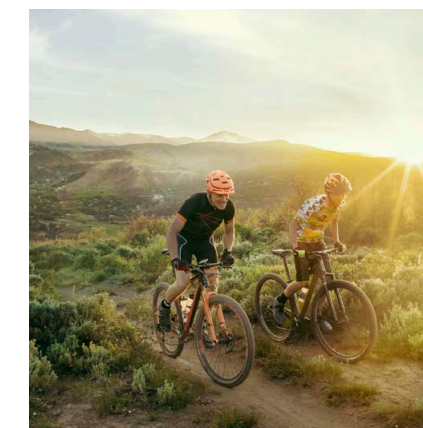
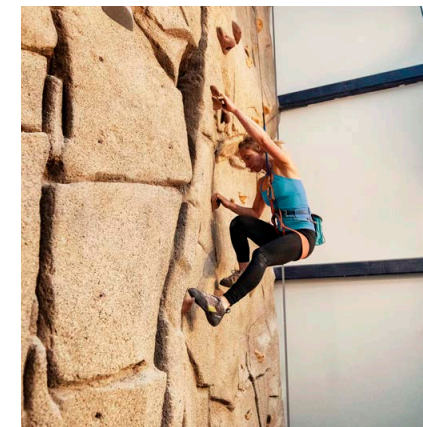
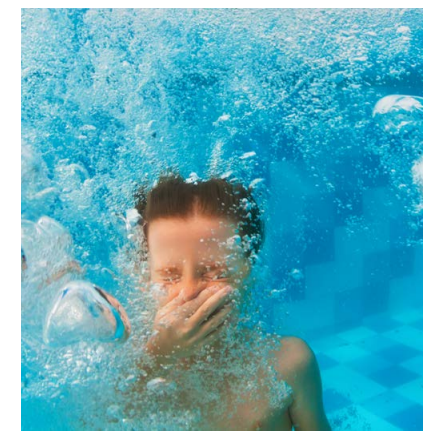
The Sky Cabins experience offers an unparalleled balance of intimate family privacy with opportunities to socialize with fellow residence owners, locals and the world of visitors in the Village.

—

Enjoy a morning workout at SBVfit or a vigorous lap swim in the Village Pool. The Village Plaza is your outdoor communal living room with ice skating, fitness classes, movie nights and impromptu soccer games. Kids splash together in the pop-jet fountains and slide down the Arbor Pods.

—

Dining options abound in any of the twelve eclectic restaurants, or pick up a bottle of wine and snacks for après fun at the convenient bodega market. Hit The Collective for a family night of foosball and ping-pong in the game lounge, or head upstairs for live music, comedy shows and educational talks. It doesn't take long to understand the "Neverbored" mantra of SBV.







LIVE ABOVE IT ALL

With direct elevator access, step right into a home inspired by a contemporary, refined mountain cabin aesthetic. Each Sky Cabin features single-level living, spacious open-concept great rooms, gracious terraces with operable window walls and luxurious spa-like baths.

SPECTACULARLY TIMELESS

With a wealth of upscale, refined finishes, all Sky Cabins showcase beautiful natural wood tones, accent walls, stone slab and quartz countertops, and thoughtful decorative lighting.



Each Sky Cabin is thoughtfully designed with one of two sophisticated finish collections. A selection of optional enhancements is also available for an even greater personal touch.

—
CADENCE

Featuring a collection of neutral, tonal and textural materials, this lighter palette creates an atmosphere of refined elegance and tranquility. A layering of light stones and tiles, paired with gold oak wood tones and dark metals, offers a bright mountain contemporary palette.

—
TEMPO

A palette of rich, dark woods applied with a contemporary style and blended with refined organic elements. A contrast of warm gray and creamy neutral stones and tiles, paired with a dark elm wood tone and silver metals, creates a dramatic canvas.



CADENCE



TEMPO





ENTERTAINING CHEF'S KITCHEN

Gather friends and family together for conversation, fine wine and delectable bites in the grand and welcoming kitchens of the Sky Cabins. Designed and equipped for extraordinary culinary and social experiences right at home, these kitchens are filled with impressive features. A custom-crafted Poliform kitchen system renowned for blending function and beautiful aesthetics, superbly crafted floors by Arrigoni Woods, Gaggenau appliances, and a Sub-Zero wine refrigerator all make entertaining effortless.



EXPANSIVE INDOOR/ OUTDOOR LIVING

Large, operable sliding glass doors open seamlessly onto expansive rooftop terraces. At the Sky Cabins, outdoor living has been designed with enough space for al fresco dining, relaxing lounge seating and an optional hot tub area – all with stunning mountain views. You're sure to spend as much time outdoors relaxing and entertaining as you do indoors.

—
Inside, full-height windows invite in the sunshine, natural light and fresh Colorado mountain air, while constant natural ventilation and all-electric appliances provide exceptional indoor air quality.



ORGANIZED FOR ADVENTURE

The signature Stow & Go program sets the Sky Cabins apart from other mountain homes, featuring convenient and effortless storage spaces. This includes secure, lockable storage cabinets for personal effects within the bathrooms and bedrooms of the residence, a separate owner storage cage, as well as ski and bike rooms.

Begin your day at Stratos Ski Lounge, where you'll find your boots warm and dry, and all your gear neatly stored. For Sky Cabin owners the Ski Lounge offers a premium ski locker room, a separate ski storage area, step-out-your-door access to the slopes, and is part of Stratos' unique Stow & Go program.

Each Sky Cabin also includes your own private garage located within the building, just like you'd find in a single-family home, providing additional storage and space for two cars.





SKY LOUNGE

PRIVATE RESORT-STYLE AMENITIES

Sky Cabin ownership comes with access to a complete set of private, shared and public resort-style amenities. Take après to new heights on the rooftop Sky Lounge and Terrace while you enjoy some of the best mountain views in Snowmass. The outdoor Terrace includes a luxuriously large spa pool, and the indoor Lounge offers the perfect spot for family game night and cozy conversations in the sunken living room. These amenities are only accessible to Stratos owners and their guests.

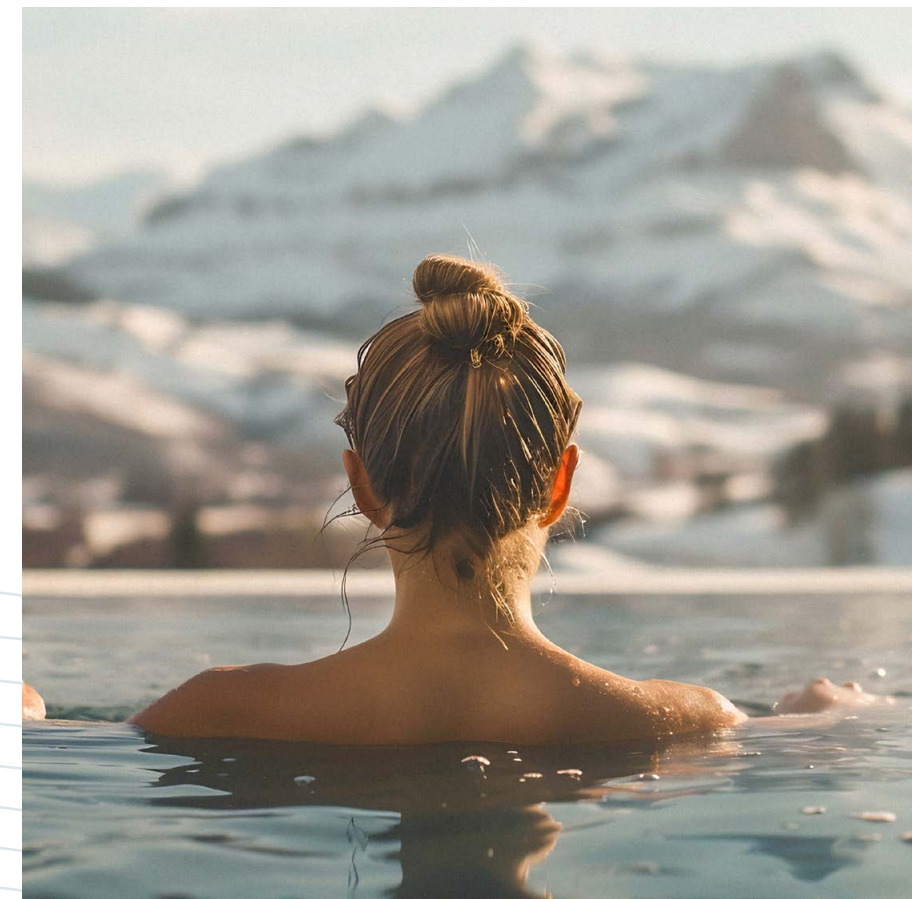


SKY TERRACE



SHARED VILLAGE EXPERIENCES

Just next door, take a dip or swim laps in the 25-yard Village Pool, complete with kids' water slide. Stay in shape at SBVfit, a 2,500-square-foot fitness center with all the latest workout gear and machines. SBVfit and the Village Pool are accessible only to Stratos and select Base Village owners, and their guests.



ADVENTURE BEYOND THE MOUNTAIN

The number of world-class events that take place in and around Snowmass is another important reason why so many families in the know choose to live, play and connect in this special area.

The summer rodeo series, concerts on Fanny Hill, farmers' markets, gourmet barbecue festivals, a colorful balloon festival, JAS Labor Day music festival, Aspen Food & Wine Classic, Aspen Ideas Festival, Aspen Music Festival, X Games and World Cup Ski Racing all call Aspen Snowmass home.



STRATOS

RESIDENTIAL COLLECTION



≡≡≡≡≡≡≡≡
LIVE TO THE BEAT
OF STRATOS

NORTH
⇓



SKY CABIN 618
Floor Plan

Sky Cabin 618

STRATOS WEST

4 Bedrooms / 4.5 Bathrooms

2,944 Interior Sq. Ft.

643 Patio Sq. Ft.

661 Garage Sq. Ft.

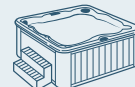
Features



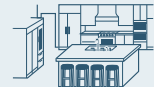
Through Residence



Rooftop Terrace



Optional Hot Tub



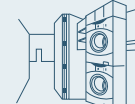
Chef's Kitchen



Primary Bedroom Fireplace



5-Fixture Primary Bathroom



Walk-in Laundry



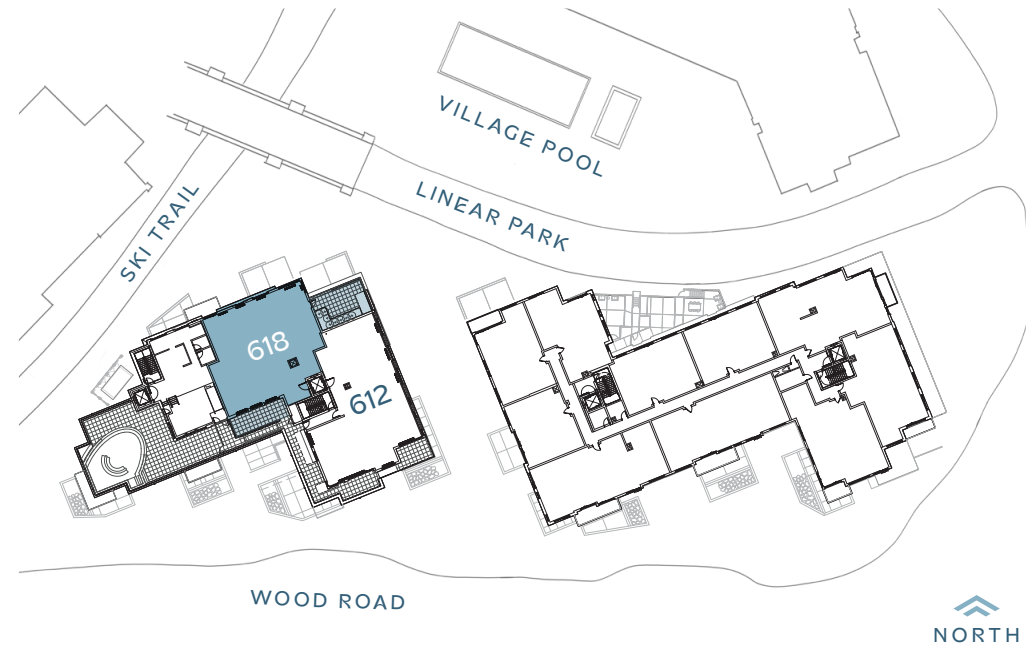
Flex Room



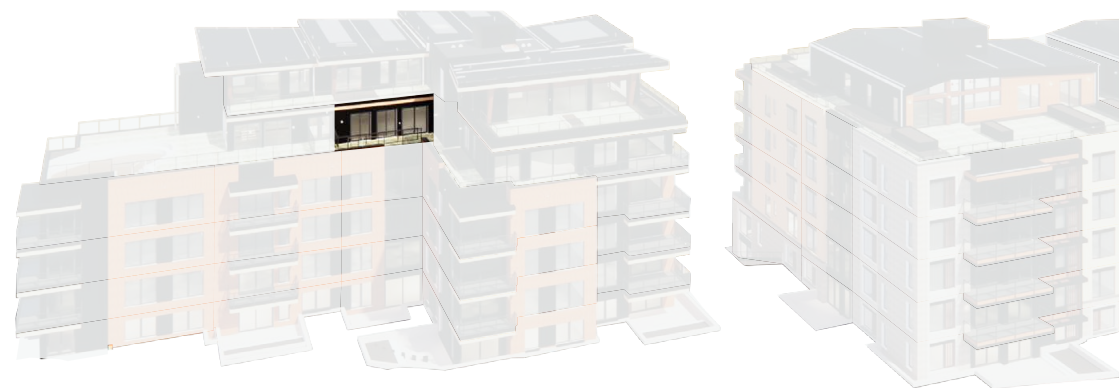
Direct Elevator Access



Private Garage



MOUNTAIN SIDE

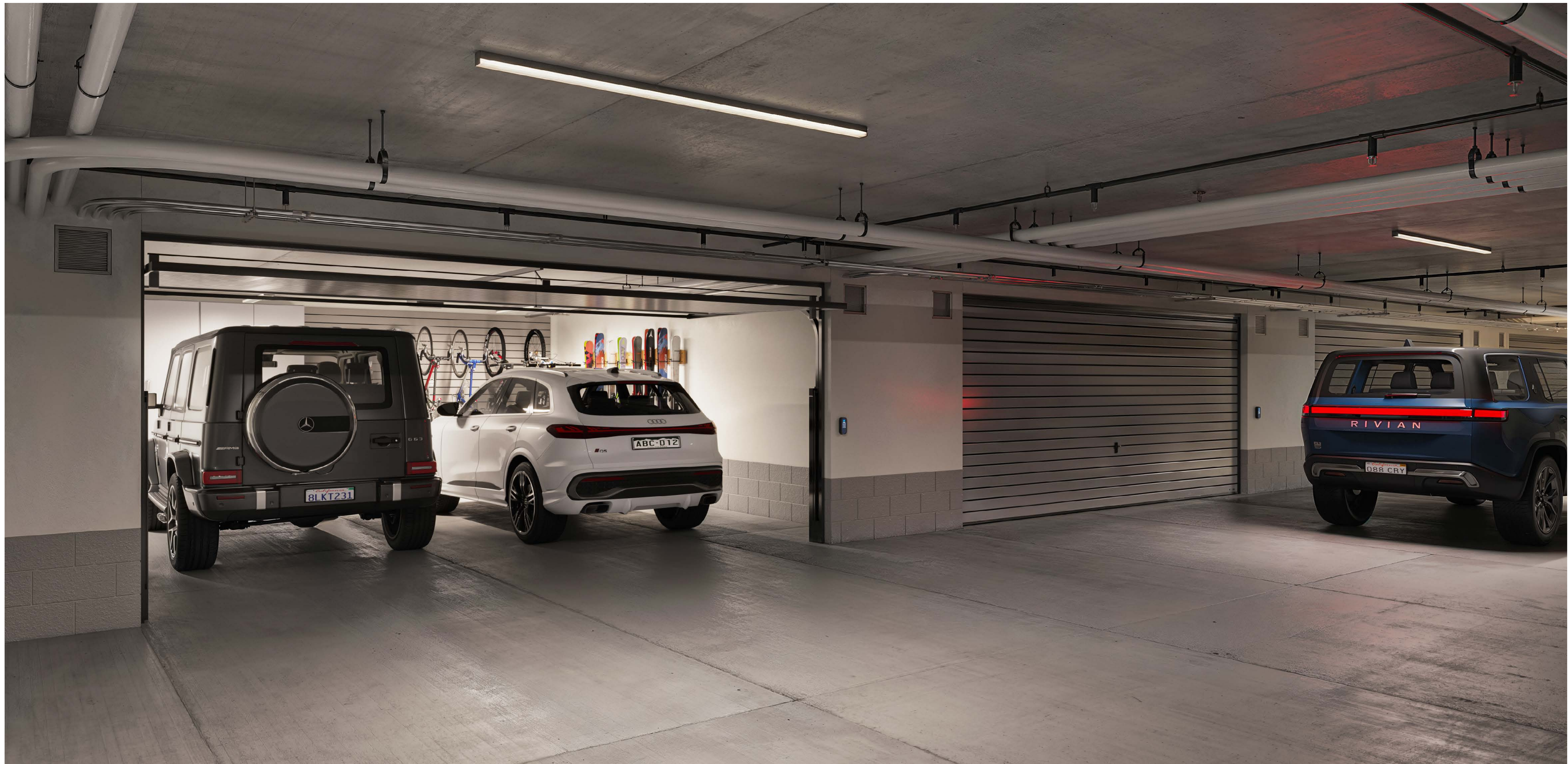


MOUNTAIN SIDE



IMPORTANT NOTICE: All depictions shown herein are artist conceptual renderings and drawings and are intended solely for illustrative purposes. They may not accurately represent the details of this specific residence and do not constitute an agreement or commitment on the part of the Seller to deliver the residence in accordance with such illustrations. The orientation, views, window configurations, features, ceiling heights and design elements vary from home-to-home. Any square footage measurements indicated herein are approximate only. Square footage calculations may be made in a variety of manners and different methods may yield different results. All residences are sold unfurnished – the furniture shown on the floor plan is not included in purchase price and is shown as a conceptual reference of potential room layouts. Interested buyers are advised to inspect the plans and specifications and to consult the terms of the Purchase and Sale Agreement for the design details and other information important to the purchase of each specific home.







SKY CABINS

PRIVATE GARAGE
& DIRECT
ELEVATOR ACCESS





StratosSnowmass.com | 970.924.9100 |



east west partners
CREATE TERRIFIC PLACES

IMPORTANT NOTICE: All depictions shown herein are artist conceptual renderings and drawings and are intended solely for illustrative purposes. The Stratos condominiums are being developed and sold by SV Building 10a Development LLC, which is part of the family of related but independent companies affiliated with East West Partners, Inc. SV Building 10a Development LLC is a separate, single-purpose entity that is solely responsible for all of its obligations and liabilities, and it is not the agent of East West Partners, LLC, or any other entity. Any reference to "East West" or "East West Partners" in connection with Stratos merely reflects this limited family of companies affiliation and does not imply that East West Partners, LLC or any other entity is responsible for the obligations or liabilities of SV Building 10a Development LLC. "East West" is a service mark of East West Partners, LLC. These materials shall not constitute an offer or solicitation in any state where prior registration is required. Void where prohibited by law. EQUAL HOUSING OPPORTUNITY. All information is subject to change without notice. Presented by Slifer Smith & Frampton Real Estate.

All depictions shown herein are artist conceptual renderings and drawings and are intended solely for illustrative purposes. They may not accurately represent the details of this specific residence and do not constitute an agreement or commitment on the part of the Seller to deliver the residence in accordance with such illustrations. The orientation, views, window configurations, features, ceiling heights and design elements vary from home-to-home. Any square footage measurements indicated herein are approximate only. Square footage calculations may be made in a variety of manners and different methods may yield different results. All residences are sold unfurnished - the furniture shown on the floor plan is not included in purchase price and is shown as a conceptual reference of potential room layouts. Interested buyers are advised to inspect the plans and specifications and to consult the terms of the Purchase and Sale Agreement for the design details and other information important to the purchase of each specific home.